

TAINER

CL-TN001S Firmware update manual



Table of Contents

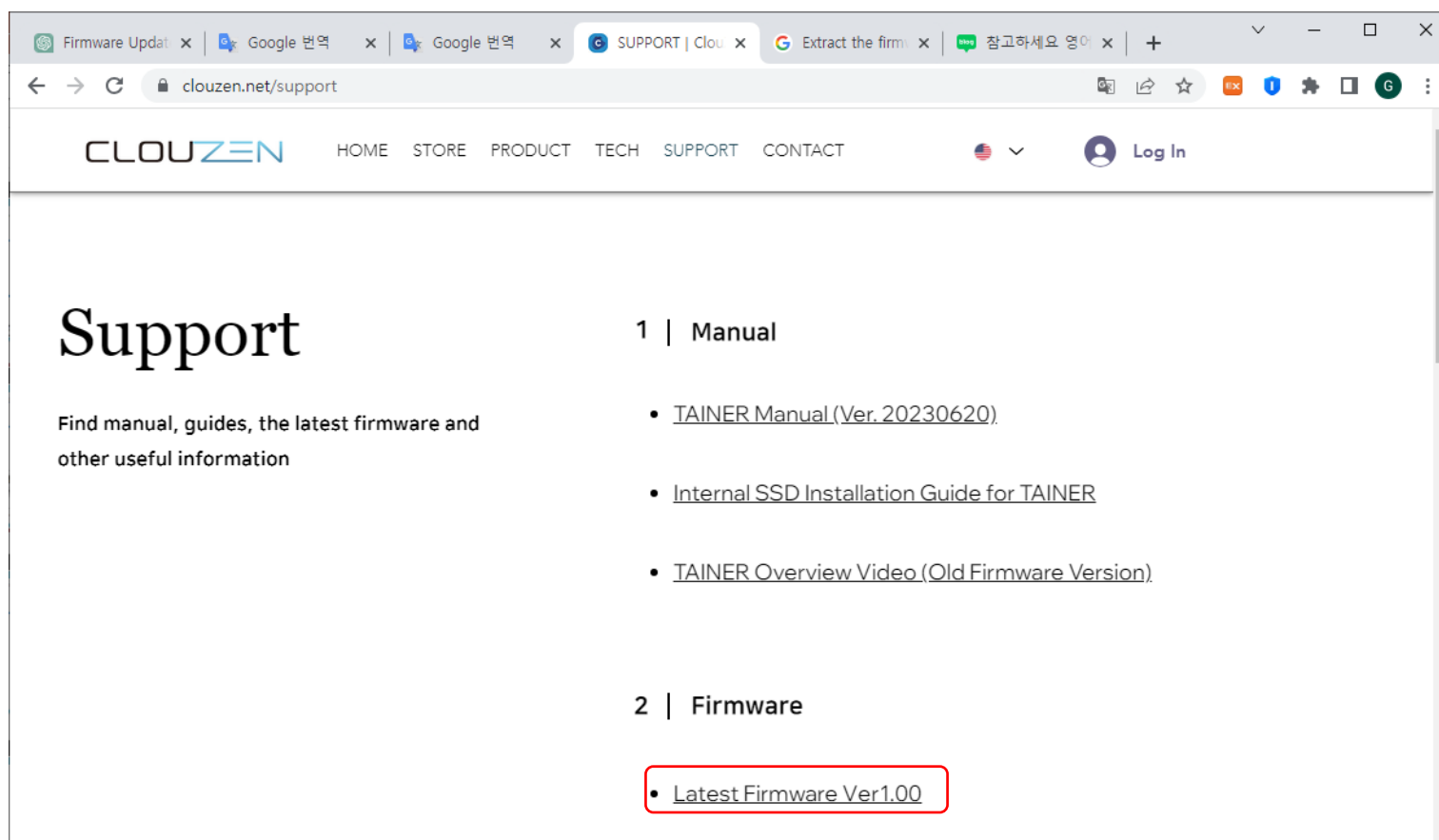
1. Preparing for firmware update	
1-1. Firmware file download	1p
1-2. A copy of the downloaded firmware file	2p
2. Firmware Update	
2-1. Firmware Update (with internal SSD)	3p
2-2. Firmware Update (with memory card)	4p
3. FYI	
3-1. How to check the firmware version installed on your Tainer	6p
3-2. When firmware less than Ver1.00 is installed	7p

1. Preparing for firmware update

1-1. Firmware file download

Download the latest firmware from the ClouZen website.

Firmware download page : <https://www.clouzen.net/support>

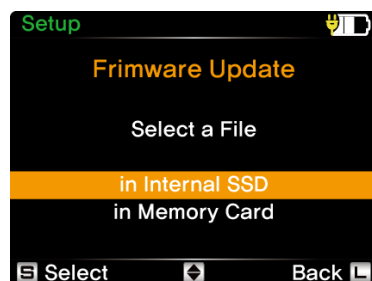


1. Preparing for firmware update

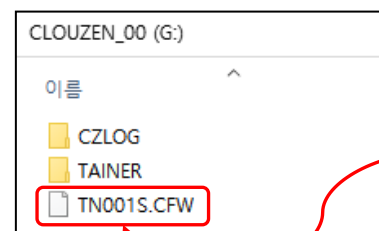
1-2. A copy of the downloaded firmware file

The firmware file is compressed in zip format. After extraction, please copy it to each device according to the update instructions.

1-2-1. When updating the firmware using the internal SDD

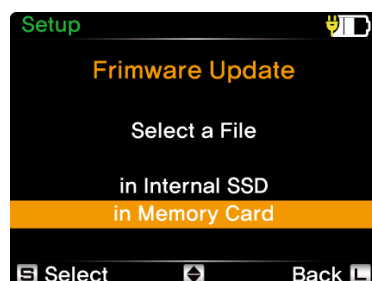


- 1) Unzip the downloaded firmware compressed file.
- 2) Copy the firmware file (TN001S.CFW) to the root folder of the Tainer's internal SSD.



Copy the firmware file

1-2-2. When updating a firmware using a memory card or USB memory



- 1) Unzip the downloaded firmware compressed file.
- 2) Copy the firmware file (TN001S.CFW) to the root folder of a memory card or USB memory stick.

* Available devices



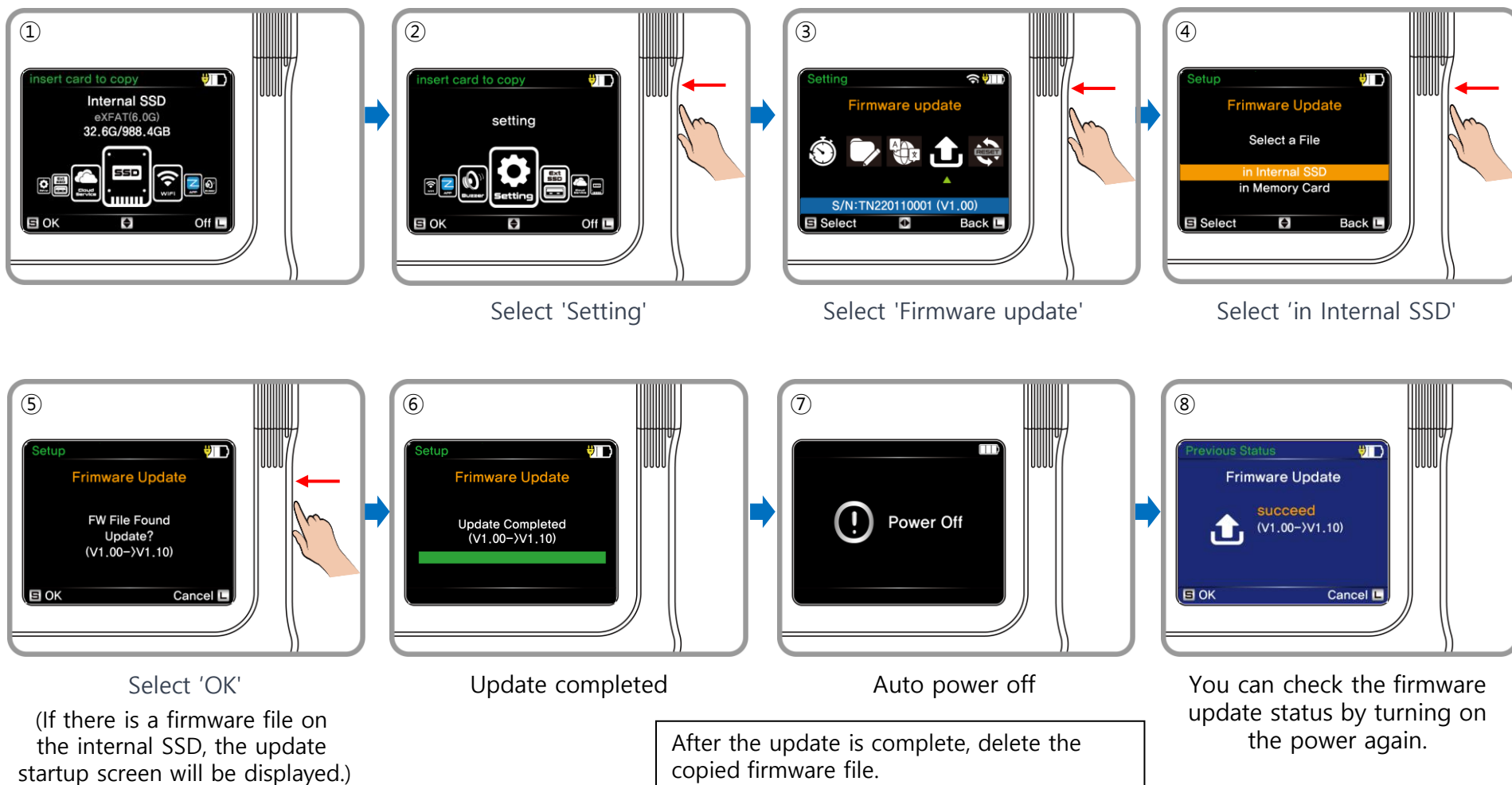
2. Firmware Update

2-1. Firmware update method using the internal SSD

- After copying the firmware file to the root folder of the internal SSD, proceed with the update.

[Caution]

If the battery level is one cell or less, connect the power and update the firmware.

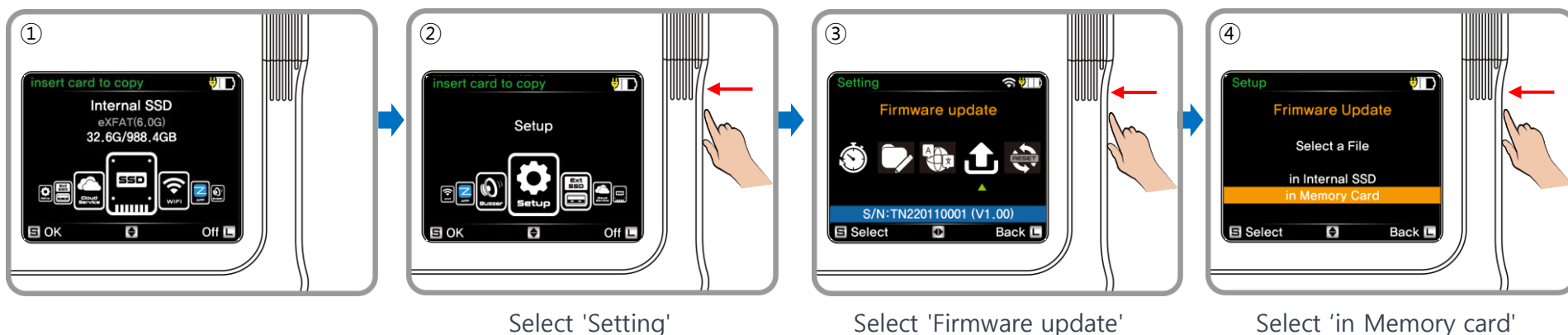


2. Firmware Update

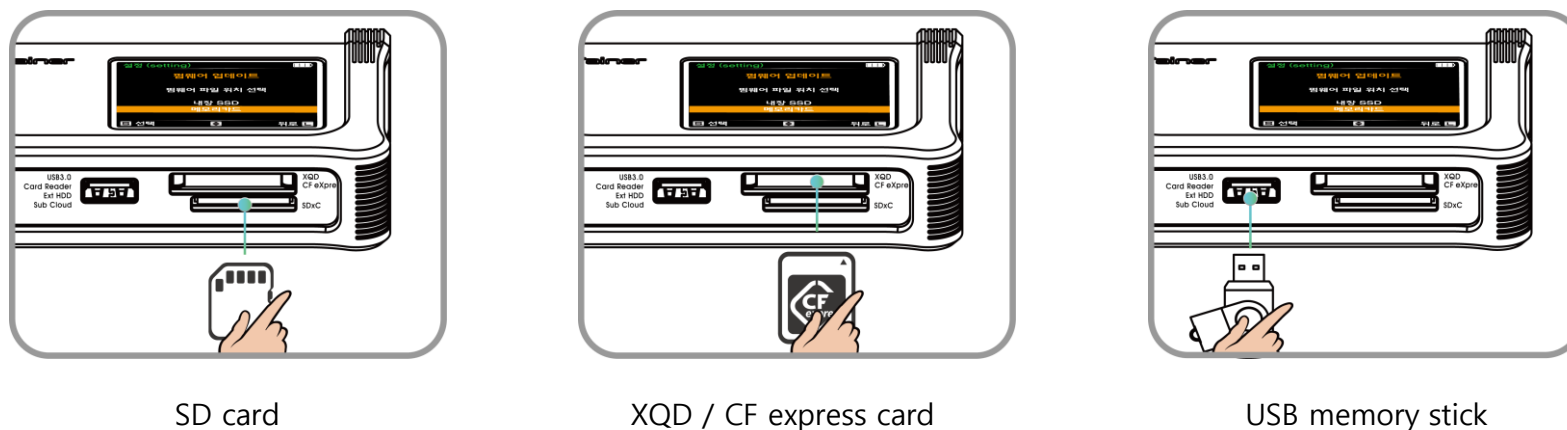
2-2. Firmware update method using a memory card or USB memory (1/2)

- After copying the firmware file to the root folder of the memory card or USB memory, proceed with the update..

[Caution]
If the battery level is one cell or less, connect the power and update the firmware.

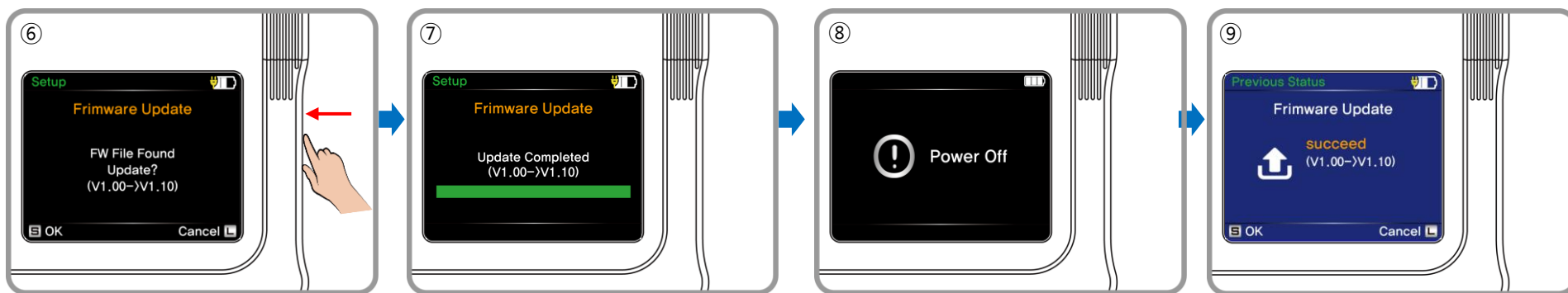


⑤ Insert the memory card



2. Firmware Update

2-2. Firmware update method using a memory card or USB memory (2/2)



Select 'OK'

Update completed

Auto power off

You can check the firmware update status by turning on the power again.

(If there is a firmware file on the Memory card, the update startup screen will be displayed.)

3. FYI

3-1. How to check the firmware version installed on your Tainer

3-1-1. Checking the firmware version while booting Tainer

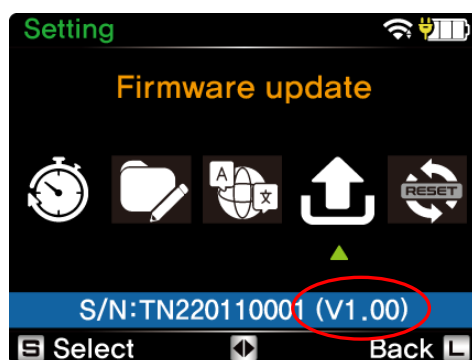


Firmware version less than Ver1.00



Firmware version after Ver1.00

3-1-2. Check the firmware version on the settings screen



Firmware version after Ver1.00

3. FYI

3-2. When firmware less than Ver1.00 is installed

- First, upgrade to firmware Ver1.00, and then proceed with the update to the latest firmware.

3-2-1. How to upgrade firmware Ver1.00

1) Download Ver1.00 Firmware

- Firmware download page : <https://www.clouzen.net/support>

2) Extract the firmware compressed file

- Refer to page 2, extract the downloaded firmware compressed file, and copy the firmware file to the internal SSD or memory card.
- List of files to copy (Total 2 files) :
TN001S.BIN, TN001S.CFW

3) Firmware update

- Tainer's Menu → Setup → Firmware update
- For detailed instructions, please refer to the video below.
<https://www.youtube.com/watch?v=f0nDCL1UvIc&t=837s>

4) Confirm the firmware was successfully updated

- Please refer to page 6 to check the version of the updated firmware (Ver1.00).

THANK YOU

